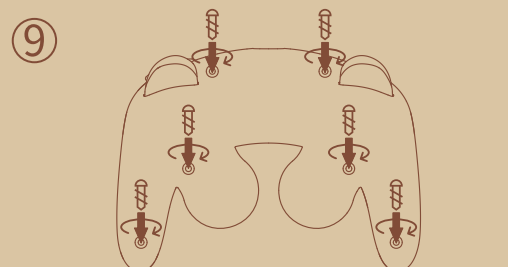
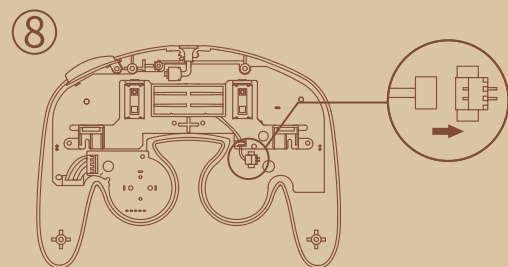
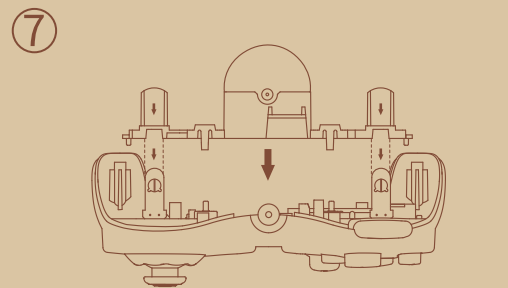
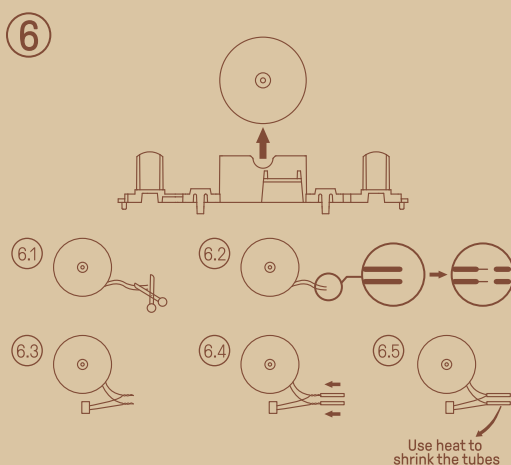
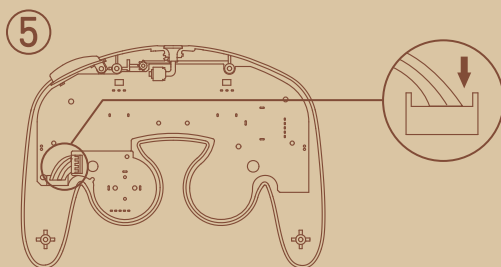
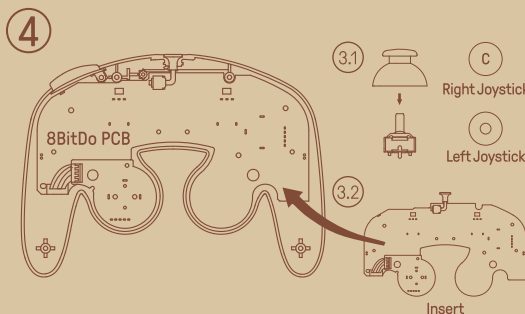
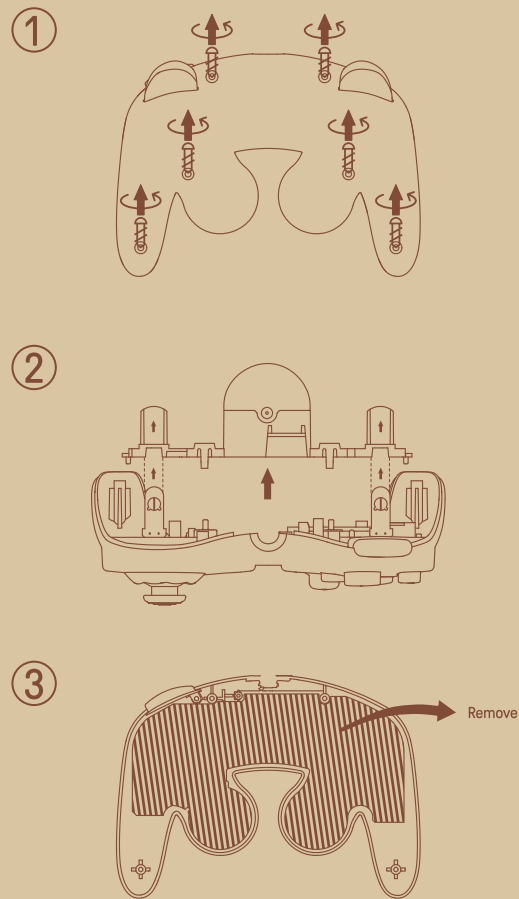


Mod Kit for NGC Controller

*Please handle with care. 8BitDo is not liable for any damage incurred during use.



Instruction Manual

- Press the **Start** button to turn on the controller.
- Hold the **Start** button for 3 seconds to turn off the controller.
- Hold the **Start** button for 8 seconds to force the controller off.

Switch

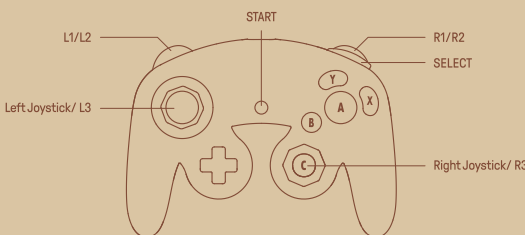
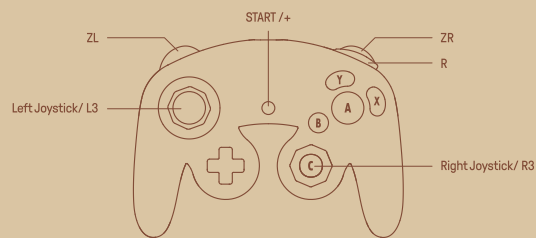
- system requirements: Switch 3.0.0 or above.

Bluetooth Connection

1. Ensure the controller is OFF, then press and hold **Y+Start** for 3 seconds to turn on the controller and enter its pairing mode, the **Status LED** will blink rapidly. (This is required for the very first time only.)
2. Go to Switch's Controller > Change Grip/Order, and wait for the connection.
3. The **Status LED** will remain solid to indicate a successful connection.

Hot Keys

- START + Down = Home Button
- START + Up = Back Button



Battery

6 hours of playtime with a 300mAh built-in battery pack, rechargeable with 2 hours charging time.

status-

low battery mode	→	LED indicator- red LED blinks
battery charging	→	red LED stays solid
battery fully charged	→	red LED turns off

- The controller will automatically shut down if it fails to connect within 1 minute of startup, or if there are no operations within 15 minutes after establishing a connection.

Support

- Please visit support.8bitdo.com for further information & additional support.

使用说明

- * 开机: 按下 START 键。
- * 关机: 按住 START 键 3 秒。
- * 强制关机: 按住 START 键 8 秒。

Switch

- * 要求 Switch 系统版本为 3.0.0 或更高版本。

蓝牙连接

1. 关机状态下, 按住 **Y + START** 键 3 秒开启手柄并进入配对状态, **状态指示灯** 快速闪烁。(仅首次连接时需要配对)
2. 打开 Switch 主机“手柄”选项, 选择“更改握法 / 顺序”, 等待手柄连接。
3. 连接完成后, **状态指示灯** 常亮。

热键

- START + Down 可作为 Home 键使用
- START + Up 可作为减号键使用

7

8

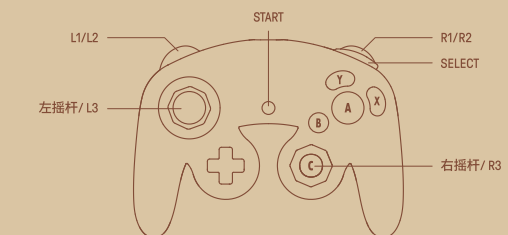
9

Android

- * 要求 Android 设备系统版本为 Android 9.0 或更高版本。

蓝牙连接

1. 关机状态下, 按住 **B + START** 键开启手柄并进入配对状态, **状态指示灯** 快速闪烁。(仅首次连接时需要配对)
2. 打开 Android 设备蓝牙, 搜索 8BitDo NGC Modkit 连接。
3. 连接完成后, **状态指示灯** 常亮。



电源

配备 300 mAh 可充电式锂电池, 可持续使用约 6 小时, 充电时间约 2 小时。

电源状态

电量不足	→	红灯闪烁
正在充电	→	红灯常亮
充电完成	→	红灯熄灭

- * 开机后 1 分钟内未连接, 或连接后 15 分钟内无操作会自动关机。

技术支持

- * 请访问 support.8bitdo.cn 了解详细信息。

Android

- system requirements: Android 9.0 or above.

Bluetooth Connection

1. Ensure the controller is OFF, then press and hold **B+Start** for 3 seconds to turn on the controller and enter its pairing mode, the **Status LED** will blink rapidly. (This is required for the very first time only.)
2. Turn on the Bluetooth of your Android device and pair with [8BitDo NGC Modkit].
3. The **Status LED** will remain solid to indicate a successful connection.