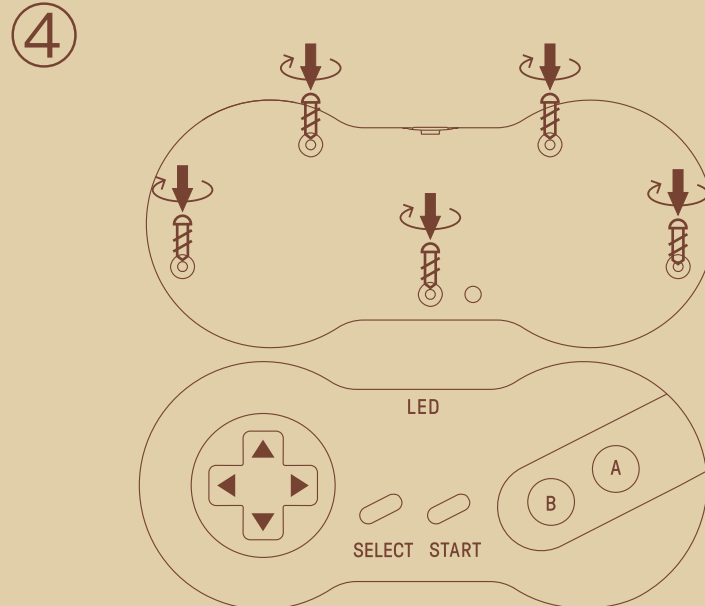
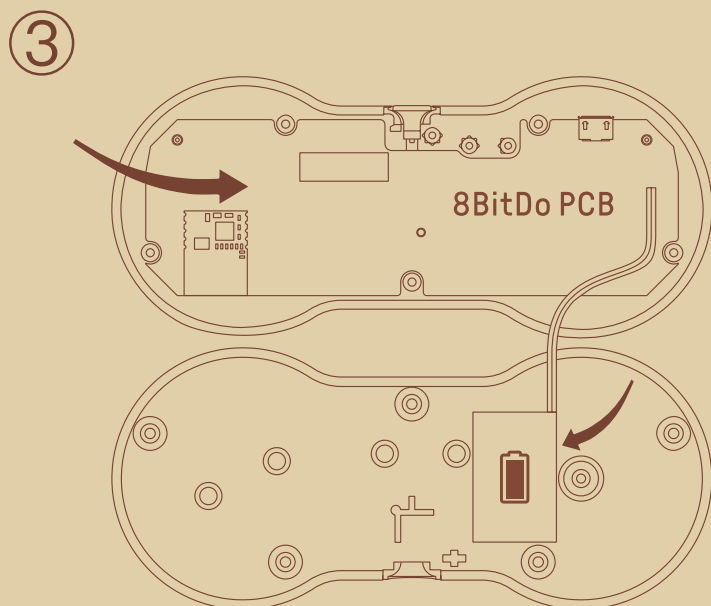
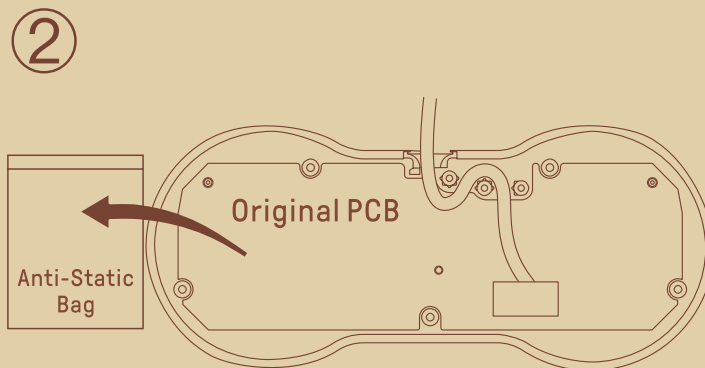
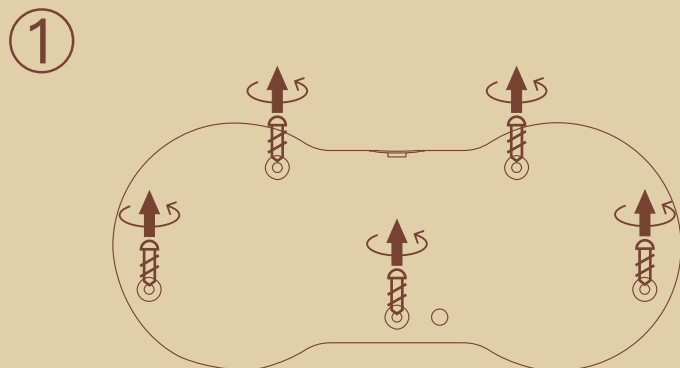


Instructions - Dogbone Mod Kit

* Please handle it with care.

We are not responsible for any damage caused in use.



Switch



- 1 – press **left + start** to turn on the controller
 - 2 – press and hold **select** for 3 seconds to enter pairing mode. LED will rapidly blink
 - 3 – go to your Switch Home Page to click on Controllers, then click on Change Grip/Order. LED becomes solid when connection is successful
 - 4 – controller will auto reconnect to your Switch with the press of **start** once it has been paired
- when connected to your Switch, **select + down** = Switch HOME button

Android (D - input)



- 1 – press **b + start** to turn on the controller
- 2 – press and hold **select** for 3 seconds to enter pairing mode. LED will rapidly blink
- 3 – go to your Android device's Bluetooth setting, pair with [8BitDo Dogbone Modkit]. LED becomes solid when connection is successful
- 4 – controller will auto reconnect to your Android device with the press of **start** once it has been paired

Windows (X - input)



- 1 – press **up + start** to turn on the controller
- 2 – press and hold **select** for 3 seconds to enter pairing mode. LED will rapidly blink
- 2 – go to your Windows device's Bluetooth setting, pair with [8BitDo Dogbone Modkit]. LED becomes solid when connection is successful
- 4 – controller will auto reconnect to your Windows device with the press of **start** once it has been paired

macOS



- 1 – press **a + start** to turn on the controller
- 2 – press and hold **select** for 3 seconds to enter pairing mode. LED will rapidly blink
- 3 – go to your macOS device's Bluetooth setting, pair with [Wireless Controller]. LED becomes solid when connection is successful
- 4 – controller will auto reconnect to your macOS device with the press of **start** once it has been paired

battery



- | status – | LED indicator – |
|------------------|---------------------|
| low battery mode | LED blinks in red |
| battery charging | LED stays solid red |

- rechargeable via USB cable with 1 hour charging time

support



- please visit support.8bitdo.com for further information & additional support

Switch



1. 按 Left + START 键开启控制器，再按住 SELECT 键 3 秒进入配对状态（指示灯快闪）。
 2. 打开 Switch 主机 Controllers 选项，选择 Change Grip/ Order 选项，等待连接，连接成功后控制器蓝灯常亮。
 3. 下次使用按 START 键可自动连接。
- * 热键：SELECT + DOWN 可作为 HOME 键。

Android (D - input)



1. 按 B + START 键开启控制器，再按住 SELECT 键 3 秒进入配对状态（指示灯快闪）。
2. 打开 Android 设备蓝牙选项，选择搜索到的 [8BitDo Dogbone Modkit] 进行连接，连接后控制器蓝灯常亮。
3. 下次使用按 START 键可自动连接。

Windows (X - input)



1. 按 UP + START 键开启控制器，再按住 SELECT 键 3 秒进入配对状态（指示灯快闪）。
2. 打开 Windows 设备蓝牙选项，选择搜索到的 [8BitDo Dogbone Modkit] 进行连接，连接成功后控制器蓝灯常亮。
3. 下次使用按 START 键可自动连接。

macOS



1. 按 A + START 键开启控制器，再按住 SELECT 键 3 秒进入配对状态（指示灯快闪）。
2. 打开 macOS 设备蓝牙选项，选择搜索到的 [Wireless Controller] 进行连接，连接成功后控制器蓝灯常亮。
3. 下次使用按 START 键可自动连接。

电源



- | 电量状态 | 指示灯状态 |
|------|-------|
| 低电量 | 红灯闪 |
| 充电中 | 红灯亮 |

- * 充电时间约 1 小时充满。

固件升级



- * 请访问 <https://support.8bitdo.cn/> 了解详细信息。